



Supreme MaxxMotor Cool Motion (External Battery) Instructions

MAXXMAR WINDOW FASHIONS

150 Bartor Road, Toronto, Ontario M9M 1H1
Tel: 416-742-6299 - Toll Free: 1-866-916-6299
Fax: 416-742-1772
www.maxxmar.com



⚠️ WARNING STRANGULATION HAZARD

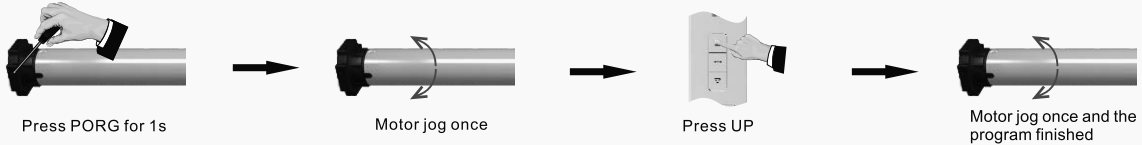
YOUNG CHILDREN CAN BE STRANGLERED BY CORDS.
IMMEDIATELY REMOVE THIS PRODUCT IF A CORD
LONGER THAN 22 CM OR A LOOP EXCEEDING
44 CM AROUND BECOMES ACCESSIBLE.

⚠️ MISE EN GARDE RISQUE D'ÉTRANGLEMENT

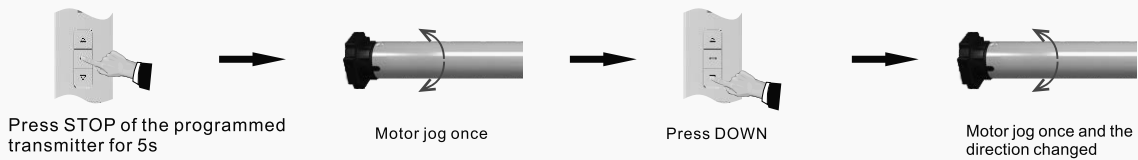
LES ENFANTS EN BAS ÂGE PEUVENT S'ÉTRANGLER AVEC DES
CORDES. ENLEVEZ IMMÉDIATEMENT CE PRODUIT SI UNE CORDE
MESURANT PLUS DE 22 CM DEVIENT ACCESSIBLE OU SI LE CONTOUR
D'UNE BOUCLE DE PLUS DE 44 CM DEVIENT ACCESSIBLE.



1. Programming

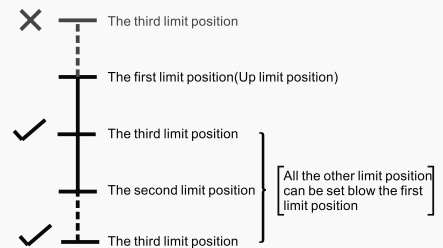


2. Change direction

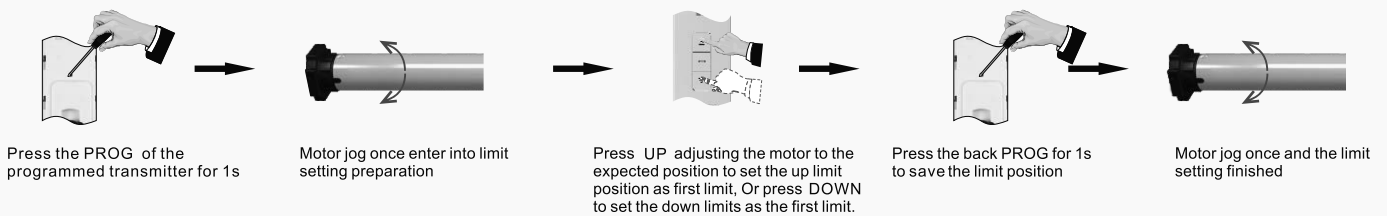


3. Limit position setting

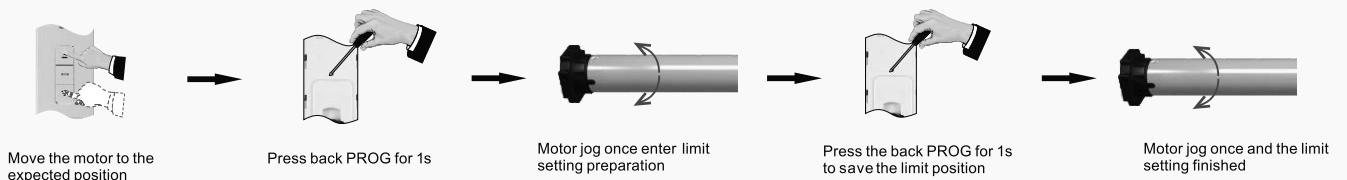
- A. Maximum six different limit positions can be set, the furthest two positions called the UP and DOWN limit position, others called the middle limit positions;
- B. When the first limit position is the UP limit position (as right illustration), all other limit positions can only be set below this position; the same thing, when the first limit position is the DOWN limit position, all other limit positions can only be set above this position;
- C. Every limit position can be fine-tuned or deleted separately (The first limit position can only be fine-tuned but can't be deleted separately. It can be deleted when delete all memories);
- D. The motor stops at the next limit position after accepting once UP/DOWN order. When it reaches the UP limit position, the UP order is no use any more; when it reaches the DOWN limit position, the DOWN order is no use;
- E. Press the UP/DOWN button twice on the transmitter at the speed of once a second, motor will go directly to the UP/DOWN limit position without any stop at the middle limit



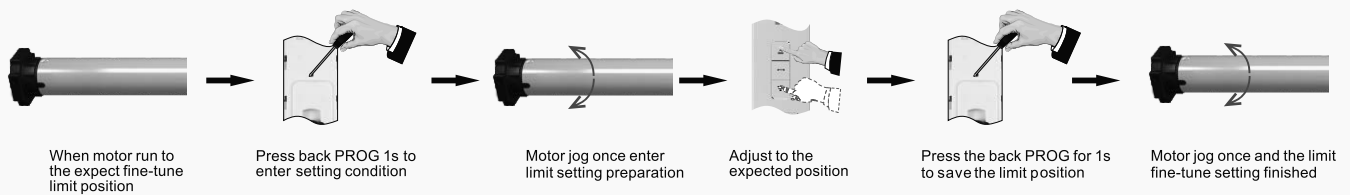
4. First limit position setting (If there's no any action within 30's, the motor will exit from limit position preparation automatically)



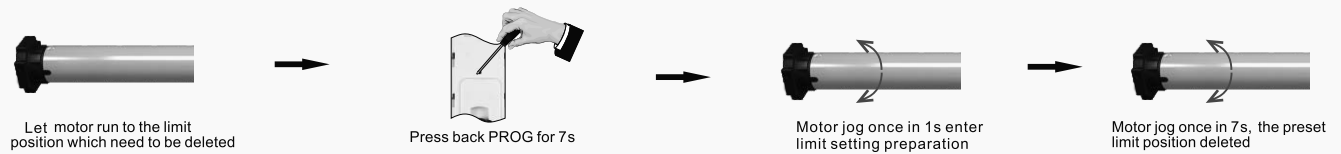
5. Other limit position setting * (If there's no any action within 30 s, the motor will exit from limit position preparation automatically)



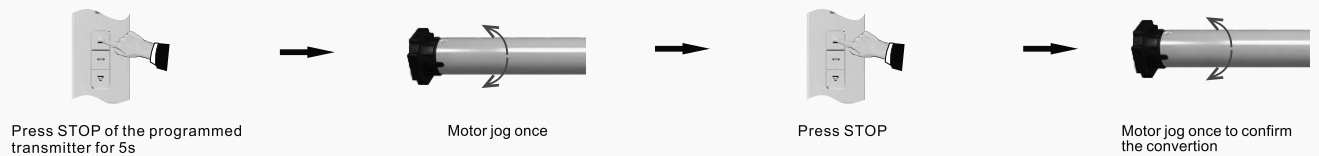
6. Limit position fine-tuning *(If there's no any action within 30 s , the motor will exit from limit position preparation automatically)



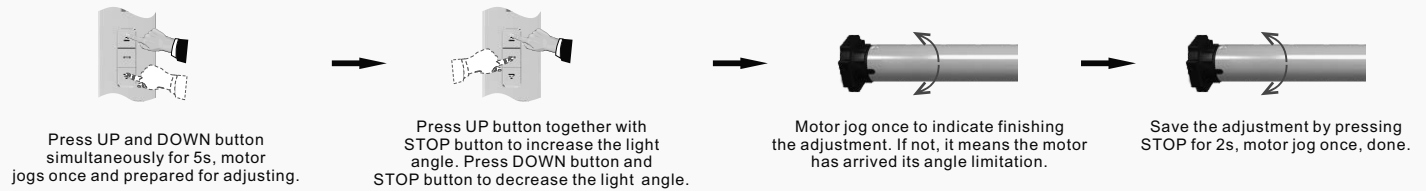
7.Delete the limit position *(The first limit position can't be deleted)



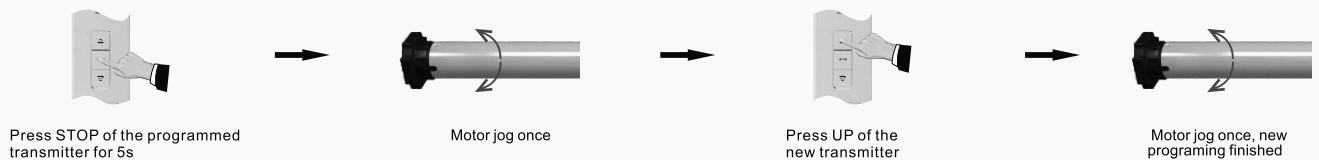
8. Tilt & Continuous Movement



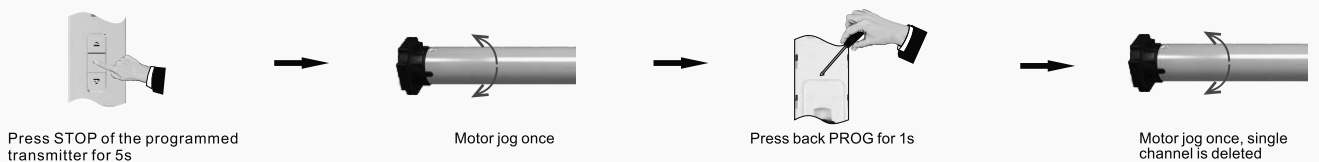
9.Tilt Angle Adjustment



10. Add the new transmitter



11.Delete single channel memory

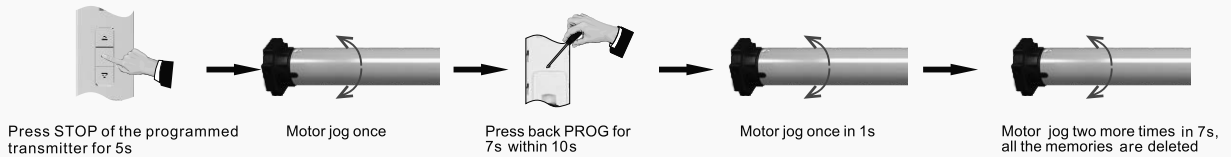


12.Delete all the memories * After deleting all codes, the motor will be restored to factory setting.

Method 1

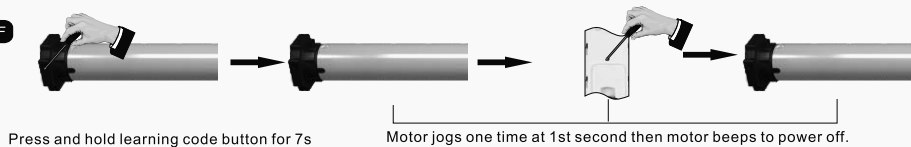


Method 2

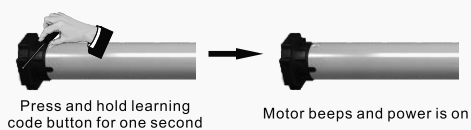


13.Power ON/OFF function * After power OFF motor does not react at remote signals.

Power OFF



Power ON



14.Reset bluetooth * Make sure the interval between every actions less than 1s

- A. Short press PROG button, release when red light comes on, repeat this action 4 times
- B. Long Press PROG button and hold for 3s until Green light flashes

15.APP instructions



1. A. Scan the QR code, then download and install APP.
B. Search for 'TuyaSmart' or 'A+Home' to download and install the smart App. Please make sure the phone bluetooth is on before operation.
2. On the interface "my home", choose "Add a devise" or click "+" at the up right corner.
3. On the interface, you will find "Devices to be added", choose go to add. For no response, 4 short and 1 long press on motor PROG button to reset.
4. Click "+" on the right corner.
5. Waiting for connecting motor.
6. Click "Done", you finished adding motor successfully.
7. On the surface, you will have "UP, DOWN, STOP" buttons for controlling motor. Click "More" for entering interface of setting.
8. On the interface of setting, for further operations.

Trouble Shooting

Items	Problem	Matter	Shooting
1	Motor does not run, or run slowly	a.Over-load protection b.Non-proper installation	a.Exchange with proper motor b.Check if proper installed
2	Motor does not run, or run slowly	a.Motor reaches the limit b.Out of battery	a.Normal situation b.Recharge the battery
3	Motor does not run, or run slowly	a.In power off mode b.Out of battery	a.Power on motor b.Recharge the battery